

HANA ENGINEERS & CONSULTANTS, LLC provides top-quality professional engineering, scientific, and construction management solutions to the federal marketplace. Hana is certified by the U.S. Small Business Administration under its 8(a) Business Development Program. Hana's personnel includes professional engineers and scientists who bring big-firm experience to a small-business environment. Services include environmental, geotechnical, civil works, and construction management.

541330 Engineering Services (primary)
541620 Environmental Consulting Services
541340 Drafting Services
562910 Remediation Services

541611 Administrative Management and General Management Consulting Services
541513 Computer Facilities Management Services
541990 Other Scientific and Technical Consulting Services

GSA OASIS +: 47QRC A25DSB52
GSA Schedule: 47QRA A22D003N
SINs: 541330ENG • 541611 • 541620
562910RMI • 562910REM • OLM

ENVIRONMENTAL

Site Assessment/Investigation

- CERCLA/RCRA Site Investigations (SI)
- Voluntary Remediation Program Investigations
- Utility and Right of Way Assessments
- Natural Resource Assessments
- Impact Assessment Planning
- Geophysical Investigations
- NEPA Assessments
- Geologic and Hydrogeologic Investigations
- Human Health and Ecological Risk Assessments
- Vapor Intrusion Assessments
- Emerging Contaminants/PFAS

Remediation

- Contaminated Soil and Debris Removal, Transportation and Disposal
- In Situ Soil Treatment
- Dredging of Contaminated Sediments
- In Situ Sediment Treatment
- Groundwater Extraction and Treatment
- In Situ Groundwater Remediation
- Vapor Intrusion Mitigation
- Site Restoration (Post-Remediation)
- Hazardous Materials Abatement

Munitions

Range Assessments

- Environmental Vulnerability/Condition Assessments
- U.S. Army and Air Force ORAP
- Marine Corps REVA

Operational Range Clearance

- Project Plans
- Vegetation Management
- Visual and Detector-Aided Munitions Clearance
- Target Replacement
- Radiological Surveys

Military Munitions Response Program

- Site Investigations
- Underwater and Terrestrial Digital Geophysical Mapping
- Public Meetings
- MC Sampling and Risk Assessments

Engineering and Design

- Treatability Study Design
- Stormwater System Design
- Shoreline Stabilization
- Remediation System Design
- Remediation System Optimization

Environmental Compliance

- Electric and Natural Gas Utilities, Renewables, Low-Carbon Fuel Processing
- Hazardous Waste Management Plans
- Air Permitting
- Spill Prevention Plans
- Stormwater Management Plans
- Pollution Prevention (P2) Plans
- Hazardous Material Surveys
- Water Quality Testing

ENGINEERING

Geotechnical

- Engineering and Design
- Site Characterization
- Instrumentation

Civil Works

- Dredged Material Management
- Shoreline Stabilization

CONSTRUCTION MANAGEMENT

- Constructability Review
- Design Management
- Schedule Services & Management
- Cost and Estimating Services
- Quality Assurance and Compliance
- Project Safety
- Scope Management
- Submittal Registry Management
- RFI Registry Management
- Change Order Management
- Project Management Software Implementation
- Project Management Software Administration
- Energy Services Consulting
- Utility / Municipal Right of Way
- Corporate Sustainability Programs
- Building Information Modeling (BIM)
- Project Feasibility Studies

DRILLING AND FIELD SERVICES

- Sonic
- Wet Rotary (Water/Mud)
- Air Rotary
- Conventional Flight Augers
- Hollow Stem Augers
- Core Drilling
- Geoprobe
- Hydraulic Profiling Tool (HPT)

HANA DRILLING CAPABILITIES STATEMENT

ENGINEERS & CONSULTANTS, LLC

Environmental and Geotechnical Drilling

- Sonic
- Wet Rotary (Water/Mud)
- Air Rotary
- Conventional Flight Augers
- Hollow Stem Augers
- Core Drilling
- Geoprobe
- Hydraulic Profiling Tool (HPT)



HANA ENGINEERS & CONSULTANTS, LLC

provides drilling professionals with decades of experience in environmental and geotechnical drilling and other services such as soil sampling, monitoring well installations, standard penetration tests, environmental investigations, sampling and analysis, and more.

Hana's drilling team, geologists, and engineers work together to execute field investigations on a wide variety of environmental projects, including CERCLA, RCRA, VRP, and other programs.

We also conduct an array of geotechnical site investigations to support vertical constructions, waterfront projects, and horizontal/Civil Works projects.



ENVIRONMENTAL CAPABILITIES

Site Assessment/Investigation

- Geologic and Hydrogeologic Investigations
- CERCLA/RCRA Milestones
- Voluntary Remediation Program Investigations
- Utility and Right of Way Assessments
- Natural Resource Assessments
- Impact Assessment Planning
- Geophysical Investigations
- NEPA Assessments
- Human Health and Ecological Risk Assessments
- Vapor Intrusion Assessments
- Emerging Contaminants/PFAS

GEOTECHNICAL CAPABILITIES

Engineering and Design

- Shallow/Deep Foundation Design
- Slope Stability/Settlement Analyses
- Ground Improvement and Land Reclamation Design
- Retaining Structure Design
- Marine Structure/Waterfront Design
- Utility and Renewables Design
- Liquefaction and Earthquake Engineering
- Numerical and Finite Modeling

Field Investigation and Site Characterization

- SPT Borings and Test Pit Investigations
- In Situ Soundings (CPT & DMT)
- Soils Laboratory Testing
- Geotechnical Instrument Monitoring

CERTIFICATIONS



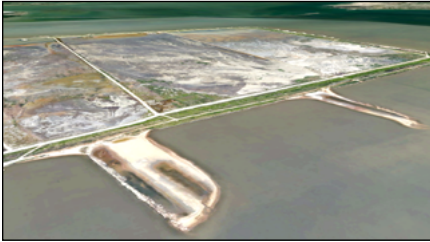
Hana is certified as an 8(a) small business by the Small Business Administration and has been designated as a Disadvantaged Business Enterprise (DBE) in selected states.

SELECT FEDERAL PROJECT EXPERIENCE



Environmental and Geotechnical Investigations at Arlington National Cemetery Southern Expansion

Arlington, VA
USACE Norfolk District



Crane Island Geotechnical Explorations

Portsmouth, VA
USACE Norfolk District



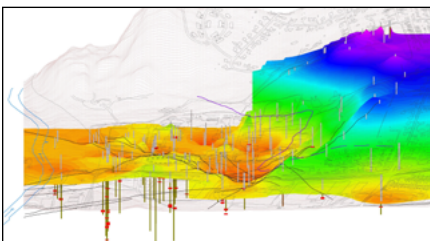
Atlantic Wood Industries USEPA Superfund Remedial Action

Portsmouth, VA
EPA Region 3



Former MAFCF Environmental Remediation Services and 5-Year Review

Independent Hill, VA
USACE Baltimore District



Groundwater Remedial Investigation and Action Support at Former York Naval Ordnance Plant

York, PA
USACE Baltimore District



PFAS Risk Communication Training for Army National Guard and US Army Environmental Command

Multiple Locations across U.S.
USACE Baltimore District



Construction Management at JBLE and DSCR

Hampton, Newport News, Richmond, VA
USACE Norfolk District



Off-Base Sampling / Mitigation for Emerging Contaminants

Various ANG Locations in Southeastern U.S.
USACE Savannah & Air National Guard



Environmental Remediation Services for US Coast Guard

Portsmouth, Cape Charles, and Yorktown, VA
US Coast Guard



Operational Range Clearance and Range Conversion to Reduced Visibility Landing Zone

MCB Camp Lejeune, Jacksonville, NC
NAVFAC Mid-Atlantic

Select Federal Clients



US Army Corps
of Engineers



NAVFAC



GSA



US Environmental
Protection Agency



Pension Benefit
Guaranty Corp.



Air Force Civil
Engineer Center



Army National Guard



Air National Guard



US Army Environmental
Command



US Air Force



US Marine Corps



US Coast Guard



Defense Logistics
Agency



Scan or click
QR code to view
selected projects